

We have discovered that many in the PSBA are ready for what is being presented tonight. Fifty pastors and several key Southern Baptist leaders participated in this process and fully support The Master's Plan for Puget Sound. But one key concern remains: is this truly the planning process that God Himself fully supports and will bless and that the churches will make their own vision for the future?

The Masters Plan is a dynamic and ongoing process that anticipates God's glory by penetrating lostness in the greater Puget Sound region. It is spiritually sensitive, adaptive to where God is working, and allows others to join us. This presentation is designed to inform the PSBA, call the churches to prayer and invite participation in detailing The Master's Plan for Puget Sound through participation in ministry. There is one goal in mind, that God would be glorified in and by His church.

# Our Purpose & Vision

- ...to serve Jesus Christ together in pursuit of the spiritual transformation of the Puget Sound Region



Our agreed upon purpose is clear and fixed. There is only One Way and One Name given among men by which we must be saved. That is Jesus Christ as revealed in the Bible. We are irrevocably committed to Christ: His life, teachings and purpose. Many believe that a spiritual awakening is coming and that our network of churches will be a part of the spiritual transformation, beginning with the household of God.

...thorough spiritual preparation and  
coaching the local churches  
so that...

...all Puget Sound  
inhabitants hear the  
gospel by 2020

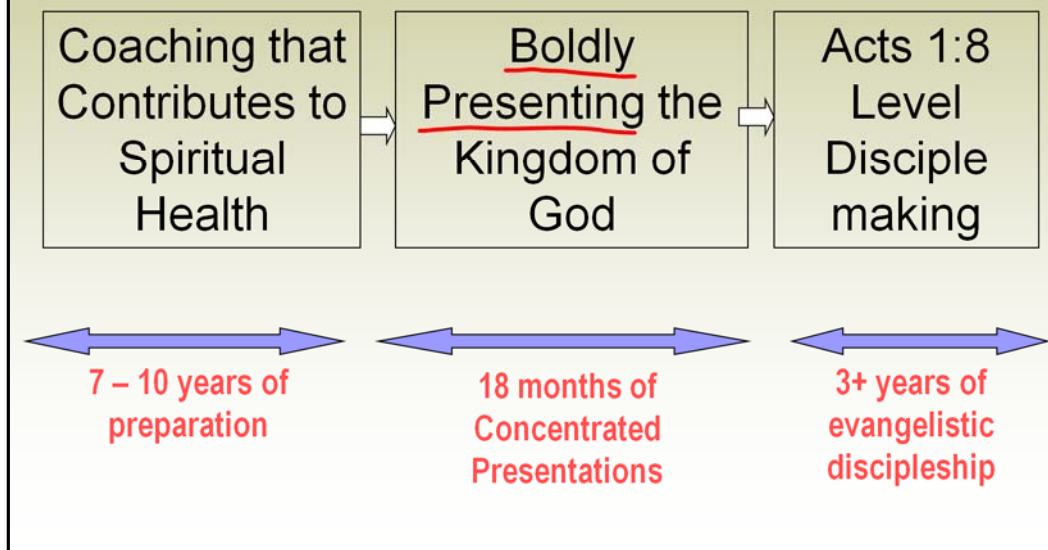


***We see a day when:*** ·1 Every person in the Puget Sound region is given the **opportunity to respond** to the Gospel of Jesus Christ·2 **PSBA effectively cooperates** with evangelical churches and ministries, and other entities where possible, to expand Kingdom growth·3 **Communities are transformed** by the power of the Gospel, reflecting the character of Jesus Christ

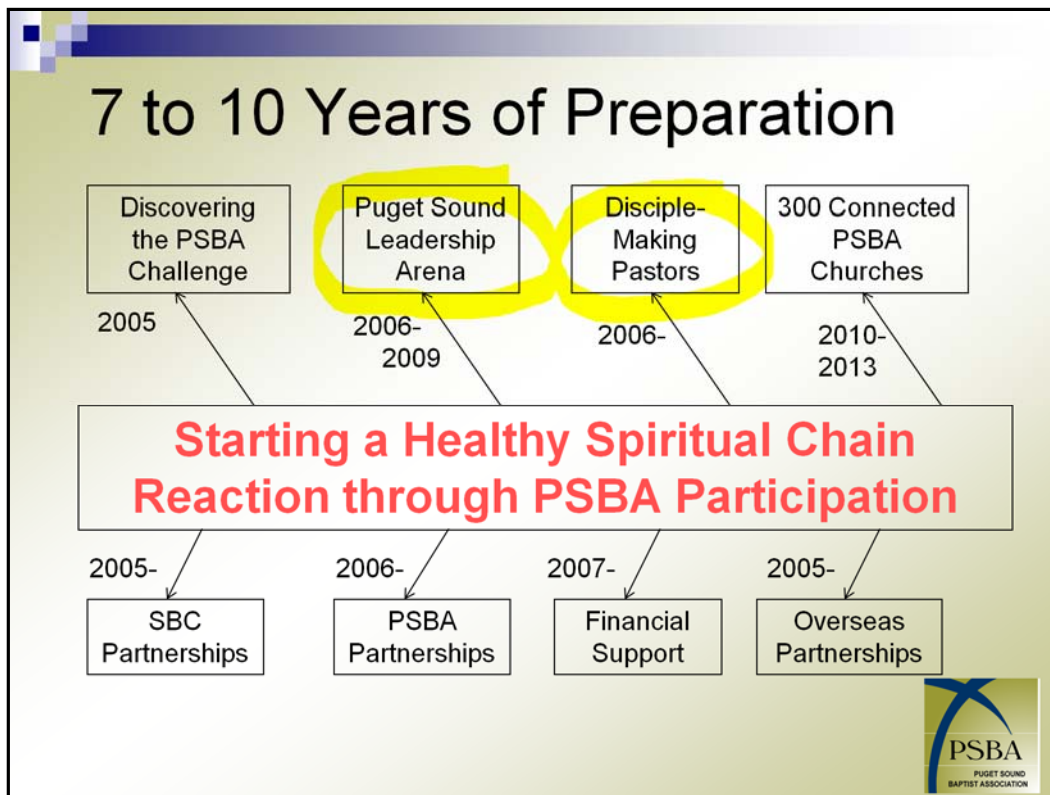
Spiritual transformation is a **sovereign work** of God. The process in this plan focuses on both **developing and maintaining momentum through necessary and extensive preparation**, leading to a launching phase for the local churches to take the gospel of Jesus Christ to their homes, neighborhoods, schools and places of work. The driving goal is that all Puget Sound inhabitants hear the gospel by 2020.

Some people have no vision. Some have a small vision. They do not present Christ in a way that calls for a response. Still others have a wrong vision. Some talented and capable people and churches are giving first class allegiance to second class causes. Then there are those with a vague vision from being unengaged. Things are not clear to them because they lack involvement. Vision gets clear when you try to accomplish it. Then there is God's vision. It is God's mental picture of a preferred future. It is seeing with the eyes of your heart what God wants the future to look like. It is spiritually charged imagination of God reaching the lost through our cooperative churches in the Puget Sound.

## A Movement of God: in 3 Stages



The Master's Plan is a three stage, sequential process: Stage one is a projected 7-10 year preparation period. When we have demonstrated a growing momentum, then we plan out stage 2. Stage 2 is not the focus. Rather it is a likely 18 month period of publicly saturating the Puget Sound Region at the highest and most common levels. It is a rallying point and time of preparing the soil to receive the seed of the gospel to be planted by believers and the local churches in Stage 3. Stage three is need oriented and discipling evangelism: not just making converts. Stage 3 is where this either succeeds or fails and the people who reside in the Puget Sound either hear or do not hear God's Good News. While we need several large churches and a public campaign, we will depend on the typical local church in fulfilling The Master's Plan for Puget Sound.



This is a cause and effect diagram showing the emphasis on doing the right new things and starting over in some areas of church and associational life. The years are only beginning suggestions of how this could progress. The items above the center are some key actions we must take. The items beneath show resourcing and support. As such they are less critical to the eventual success of The Master's Plan for Puget Sound. Let me say that again, the supporting partnerships are less important than our actions within the Puget Sound. The resources are in the harvest to come.

The preparation really comes down to raising up spiritual leaders within the local churches. Pastors need to become disciplemakers and we need to assist the pastors in raising up a co-equal group of lay leaders to keep the church on God's agenda.

Our younger church leaders are beginning to come forward and plug into the association. I am committed to discipling the young and preparing them for lay and pastoral churchmanship that emerges in their late 20s to early 30s... I see a day when we are known for mentoring and training men and women ages 18-30.

## Our Strategy: Acts 14:21-28

- Go and evangelize...
- Go back to strengthen and encourage...
- Go home and assure others...



Our strategy is simple...

Think in terms of wave after wave of believers going into new places, going back out after being washed up on shore and not going home until the job is done: no more excuses.

Go and evangelize, making disciples. There is some point at which enough disciples are made that scripture calls that an evangelized place.

Go back to strengthen and encourage, telling the new disciples that they must pass through many troubles on their way into the kingdom of God.

Go home and assure others that indigenous, trustworthy disciples are leading the new work and can be trusted.

Home could be our partners, such as NAMB and LifeWay. It could also be our existing PSBA churches. Our Baptist culture is not what makes us Baptist. Rather it is purpose and mission. It is our cooperative commitment to theology and doctrine, as represented in the Baptist faith and message.

# Puget Sound Leadership Arena

- Develop Pastoral Leadership:  
focus on young men
- Biblical Theology, Systems Thinking,  
Character Development
- **...to raise up indigenous church  
planters & disciplemaking pastors with  
a passion for God and His glory**



In 15 years, our older students and younger adults will be in their prime to fulfill our purpose. This suggests that we must now plan and prepare for the success of the next generation: those now ages 18-35. We want to pass on a clear thinking church, passionate for God's glory. Biblical, rather than cultural; understanding how changing one thing has positive and negative impact on all other things; personhood and integrity issues.

We need healthy and adjusted "insiders" who understand and like the people, culture and direction of the greater community where we live and can see how God would like to work.

What are we really committing ourselves to in this process?



## Healthy Churches are Growing Churches

...that Reproduce and  
Keep People & Churches



All of creation bears witness to the fact that health results in growth and reproduction. We are to reproduce within the local church and in starting new churches. If we are not healthy, our spiritual children, including our natural born children are not likely to stay around. They will stay and our fruit will remain because we are spiritually healthy.

- **Empowering** Leadership
- **Gift-oriented** Ministry
- **Passionate** Spirituality
- **Functional** Structures
- **Inspiring** Worship Services
- **Holistic** Small Groups
- **Need-oriented** Evangelism
- **Loving** Relationships

*Balance all 8!*



These eight characteristics represent church health. They are developed using living and necessary principles on which God operates, permitting growth from God. A long term approach to develop these characteristics is essential. This is a process that takes 3-5 years to infuse into a church, new or established, large or small, Anglo, Asian, Latino or African.

The emphasis is on the adjectives, not the nouns. The Administrative Team is developing a church mentoring model for churches where too many of these characteristics are quite low.

This asks the question of how can this come to be in the local church?

## 1 Peter 5:1-3

- **A group of qualified co-pastors  
shepherding the flock**
- **Overseeing the church through the  
teaching ministry**
- **Serving the people, as examples of  
Christ**



It will take a biblical view of church leadership to move in this direction. It will take time, effort, patience and a growing commitment to the Bible's teaching.

The Pastor and the church both need a pastoral team around the lead pastor for support, assistance and accountability. This is clear and consistent in Scripture. The strength of the pastoral team is oversight of the congregation through a working knowledge of the Scriptures. Oversight is a necessary function of the pastoral team. And it is a right handling of the Scriptures that must direct the church, not organizational documents or public opinion.

The overseers lead for the good of the church, not for themselves.

In other words, we need a strong team in every church with each member committed to a scriptural practice of church life.

## 300 Connected PSBA Churches

- Inner City \* Seattle \* Tacoma
- Spiritual Outposts in Strategic Stronghold Areas & Neighborhoods



Seattle and Tacoma are our twin mother cities. We have largely left them behind. We need some Marines to go behind enemy lines, light some targets and establish some outposts.

We need several faithful inner city church plants that break the spiritual strongholds. We must have a level of community service and ministry that earns the right to be heard over the noise of the city. We need extensive praying on sight with insight and regular community worship events like ONE. We won't do this unless we are united in vision and purpose, unless we see the connection between what happens in downtown Seattle and Tacoma to what happens in even outlying rural areas. Decisions are made every week at Microsoft and Boeing that affect your future ministry as well as your livelihood. We need to know about it and we need to start influencing it. We won't and we can't until we become a recognized spiritual influence throughout the Puget Sound region, including the old cities.

# Puget Sound Partnerships

- All groups doctrinally sound and fully committed to and focused on the local church
- It will take all churches with biblical theology to reach the Puget Sound region



Some para church type ministries are excellent partners in ministry. Some para church type ministries are competitive with and/or condescending towards pastors and churches. Since this plan depends on God's grace, including growing humility, prayer, worship and maturity, it will be clear who does not match the intent of this plan. As such, they will not be partners.

Before we can say much to other groups, we must first look to ourselves in this regard. Are our pastors and churches doctrinally sound and fully committed to and focused on the local church? Are we giving our best to our church? Are our pastors giving their best to the Lord and their church?

Will we embrace God's people outside of our association and convention? Christ has already said yes on our behalf.

# Boldly Presenting the Kingdom

## preparing the soil for planting

- **KEY: 18 months of sequential and concurrent strategic events that unite, inspire and motivate believers to embrace the Great Commission and Great Commandment**



This is a season of breaking up hard soil throughout the entire region with sequential and concurrent events. Marketing is what you do AFTER, not before, you have a product. Once the Gospel is working in a high percentage of our churches, then we go public. Until then, we do not have a product for Puget Sound or the world.

Let me speak to older churches. In 1905 the average man lived to age 43... the average woman 47. In 2005 the lifecycle has grown to 74 for men and 77 for women. A lot has happened that counters death. What is true for people can also be true for churches. We can extend the successful lifespan of churches that are willing to make some healthy changes. God wants us to thrive, not just survive. In John 9, Jesus healed a man born blind. The man encountered Jesus, received sight and became a person of hope. My dream includes declining and dying churches having their eyes opened and becoming hopeful. God can get us over our hopelessness. The PSBA will help those that are ready to be helped.

This is no less than declaring war and taking the ground long held by the enemy. The Bible says the gates of hell will not prevail against the church, but it must be an obedient, God focused church. With God and under the Lordship of Jesus Christ, we are going public with strong pastoral teams leading strong churches that won't be stopped, because they paid the price over an extended time and became spiritually healthy and strong.



The things we are tempted to focus on are really the by-product. These important measurements of effectiveness grow out of personal, group and church discipling.

The numbers do not tell the whole story, but they tell an important part. Healthy living organisms grow, mature and reproduce.

Within the next 24 months or less, the PSBA will have 4-5 churches running over 1,000 in attendance. Within the past year, one church has gone from the high 300s to almost 700 in weekly attendance. Another church has grown to an average of 630. Another has grown from around 350 to over 450. Several churches that were just over 100 are now around 150. No church should be running less than 100 on an average. We will spiritually coach you to that end.

As the churches reproduce new disciples and new churches, the PSBA must reproduce. We will take on and partner with an increasing number of Southern Baptist Associations in the North West. We will give back to the Northwest Baptist Convention and give generously. Additionally, we will train up new associational directors who will go and lead other associations, hopefully in the northwest, to discover and embrace the Master's plan for themselves. Lastly, let me mention the importance of international partnerships where we live out Acts 1:8 at its most challenging level, in order to learn how to work with unreached people groups here in the Puget Sound. We will be working with 20 or more countries in the coming years.

# Acts 1:8

- **Local church, hands on ministry, touching the world through people groups at home and overseas**

*“Stand your ground. Don’t hold back.  
Throw yourselves into the work of the Master,  
confident that nothing you do for Him is a waste of time or effort.”*

-1 Corinthians 15:58, tm



During the first slide I asked the question and raised the concern, “Is this truly the planning process that God Himself fully supports and will bless?” I believe so. In the coming months it will become increasingly clear whether or not this truly is The Master’s Plan for Puget Sound. If it is, this is what will happen, among other things:

...we will become more inclusive within and among the churches. ...we will be more submissive to one another in love within and among the churches. ...we will become more self-sustaining as churches and as an association. ...and we will support leadership development in the church and through the PSBA.

What can you do? First, begin praying every Tuesday for a united PSBA vision. Remember the leadership and the ministries. Without apology, will you pray for me? I don’t have easy access to an adequate number of lay people, so I am asking you now, will you include me in your weekly prayers on Tuesday?

Second, test this presentation against the scriptures and your heart. Ask God to clarify if this is His vision and plan that He will bless. If so, ask Him to make it your vision.

Third, get involved and give limited but quality ministry through one of the PSBA ministry teams. Serve in your church first. Then serve in the association.

All this is for your consideration. Respectfully submitted,

Ron Shepard, Executive Director, PSBA **“rejoicing in hope, persevering in tribulation, devoted to prayer.” ~Romans 12:12**